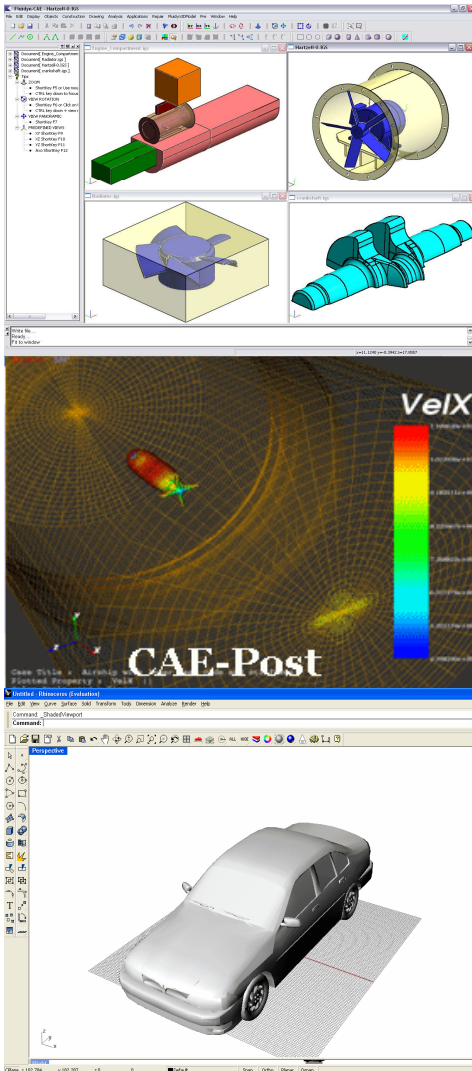


## CAD PRE – POST PROCESSING



*fluidyn-CAE*® is a new generation software for mechanical, chemical engineers. Fluidyn-CAE is a CAD based software which can be used in case studies pre-processing, and as post-processing of results. It is a powerful tool for application-performance-seeking engineers, especially to save time and gain efficiency in case set-up, optimisation and post-processing data. It is related to fluidyn-MP software for solution and for meshing optimisations.

*fluidyn-CAE*® is used for the following activity sectors for various applications:

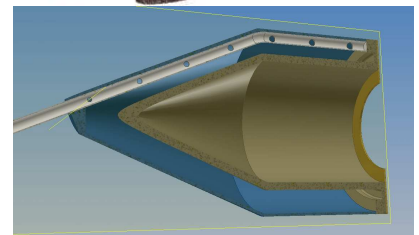
- General fluid flow analysis / Aerodynamics
- Fluid-structure interaction/Conjugate Heat Transfer
- Aero-acoustics
- Aerospace – Defence
- Transportation – Automotive
- Chemical and Petrochemical processes
- Environment, Industrial risk and Safety
- Energy : Thermal/Nuclear/Alternative
- Construction – infrastructure
- Marine – Offshore
- Turbo-machinery
- Metallurgy, Glass, surface treatment,...

### TECHNICAL DESCRIPTION

*fluidyn-CAE*® is a general CAD tool which allows engineers to perform powerful CAD modelling, and prepare geometries for efficient and fast meshing. There are two, ways generating CAD geometries in Fluidyn-CAE, usually named as follows:

- Bottom-up method for which points, curves, nurbs, surfaces, volumes are created.
- Top-down method which allows the user to create geometries from 3D primitive objects and Boolean operations on volumes

Fluidyn-CAE allows to create specific primitives and store them for specific applications (obstacles, pipes; windows, desks, persons, ....).



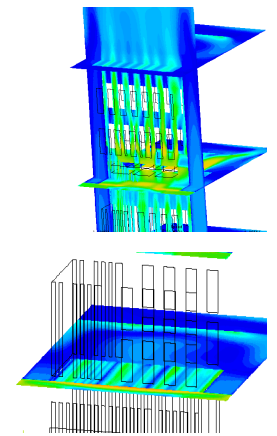
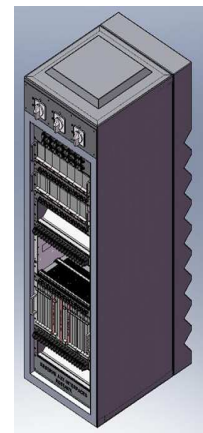
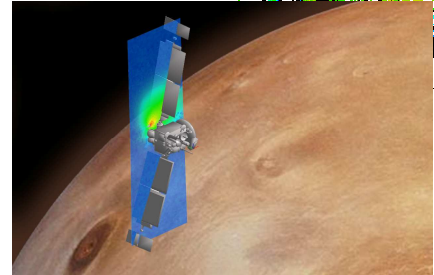
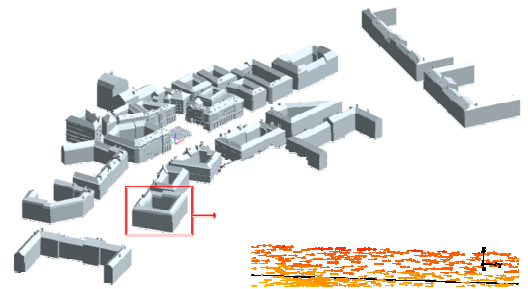
*fluidyn-CAE* allows to import external CAD standard format such as : IGES/DXF/STL, STEP, X\_T,... Efficient repairing tools are available to clean geometries and convert rough CAD files into topologically valid shells, ready for meshing. *fluidyn-CAE* is a user-friendly GUI based software, with advanced graphical picture edition.

*fluidyn-CAE* allows to export specific format to *fluidyn-CADGEN* after geometry completion or CAD-import/repair operations, in order to get fast and/or efficient specific meshing.

*fluidyn-CAE-Pre* is a real pre-processor for case-setup, which simplifies work for engineers. All input data can be entered through the CAD-GUI,

*fluidyn-CAE-Post* allows the user to perform post-treatment on geometry with a very good display quality (VTK), simultaneously on fluid and structure results, including :

- Geometry/Mesh
- Velocity vectors
- Contours properties
- Deformations/displacements
- Surface Contours
- Streamlines
- Sections, profile lines, curves,
- Statistic treatment of signals.
- Etc...



<p align="center"><b>FLUIDYN FRANCE</b></p> <p>7, Boulevard de la Libération F-93200 SAINT DENIS FRANCE Tél : 33-(0) 1-42 43 16 66</p>	<p align="center"><b>email:contact@fluidyn.com</b></p> <p align="center"><b>www.fluidyn.com</b></p>	<p align="center"><b>FLUIDYN INDIA</b></p> <p>146, Ring Road, Sector 5, H.S.R. Layout Bangalore - 560 102 INDIA Tél : (91)-(80)-25526507</p>
--	---	--

